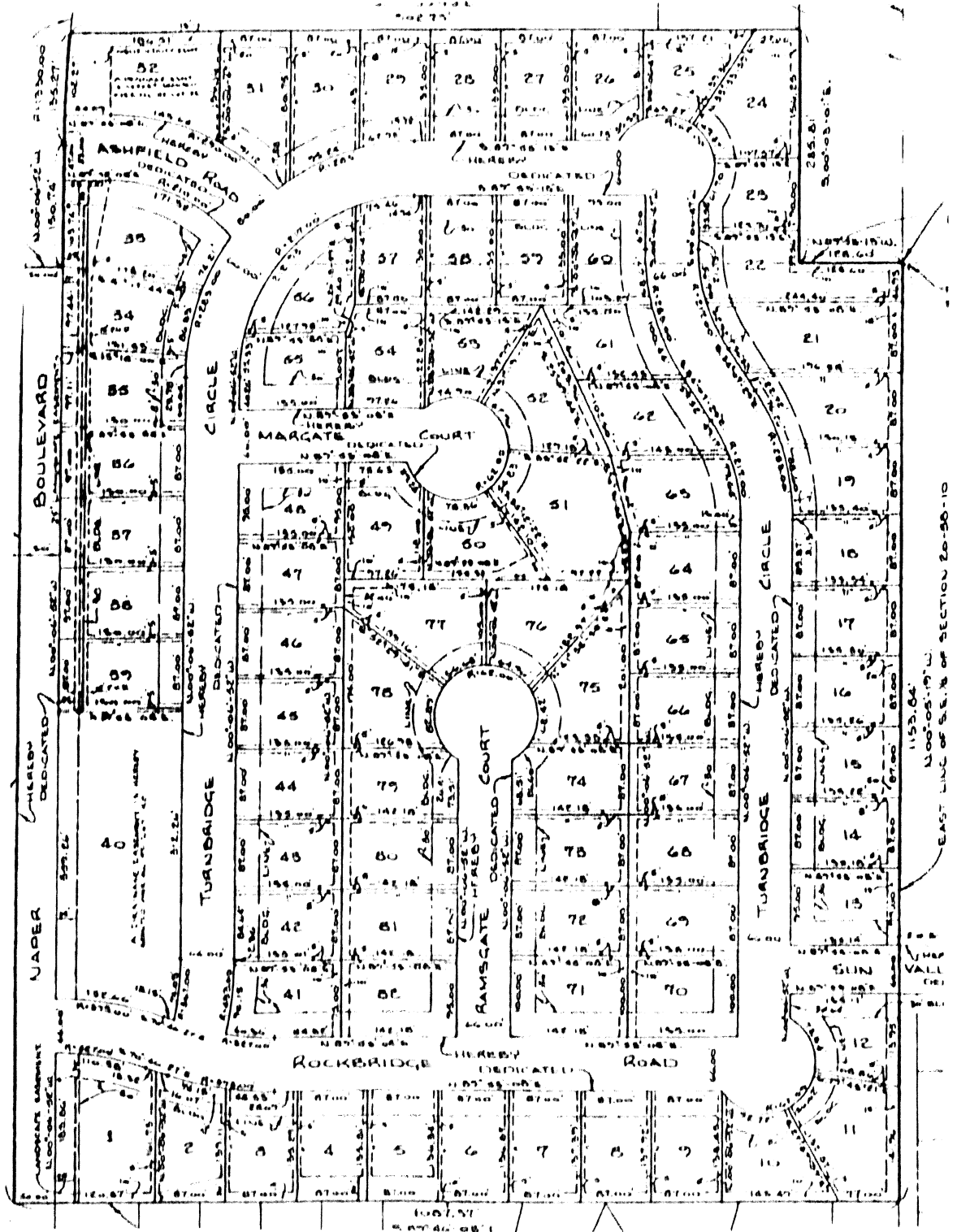
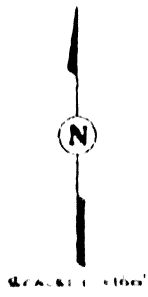


FINAL SUBDIVISION PLAT

KNOLLS OF HUNTINGTON

PART OF THE EAST HALF OF SECTION 20, TOWNSHIP 26 NORTH, RANGE 10 EAST OF THE THIRD PRINCIPAL MERIDIAN, IN THE CITY OF NAPERVILLE, DUPAGE COUNTY, ILLINOIS.



EAST LINE OF S.E. 1/4 OF SECTION 20-26-10